

## OVERVIEW:

Material handling equipment are the tools and devices used to move, store, control, and protect materials and products throughout the manufacturing and distribution process.

This equipment plays a vital role in increasing efficiency, enhancing workflow, and ensuring safety.

## FEATURES:

**Expertly Welded Joints:**  
Offers maximum strength and reliability for storage and transportation.

**High-Capacity Design:**  
Efficiently stores multiple sizes of materials in one convenient location.

**Sturdy Construction:**  
Built with top-quality steel and welded joints for long-lasting service.

**Industrial-Grade Casters:**  
Enables easy mobility for tailored placement and transport.

**Easy Accessibility:**  
Thoughtfully designed for quick access to materials without hindrance.

**Safety Mechanism:**  
Includes safety clips to secure materials during transport or storage.

**Customizable Options:**  
Available in various configurations to meet unique storage requirements.

## COMMON USES:

Material handling equipment is essential in various industries, particularly in:

- ☉ **Warehousing and distribution**
- ☉ **Manufacturing**
- ☉ **Construction**
- ☉ **Logistics and supply chain**

## Types of Material Handling Equipment at Crone Metals:

Material handling equipment is essential in various industries, particularly in:

### ☉ **Heavy-Duty Sawhorses:**

Engineered for strength and durability, these sawhorses can support substantial weights, making them ideal for various industrial applications.

### ☉ **Adjustable Cart:**

Our versatile carts can be adjusted to suit different needs, providing efficient transportation of materials within your facility.

### ☉ **Tree Rack:**

Specially designed for orderly storage, our tree racks allow easy access and handling of materials, optimizing workspace functionality without sacrificing load capacity or durability.

## WHY CHOOSE CRONE METALS?

Material handling equipment is essential in various industries, particularly in:

- ☉ **Quality Craftsmanship:** Our equipment is designed with precision and expertly welded, ensuring long-lasting performance.
- ☉ **Customized Solutions:** We offer tailor-made products to fit the unique requirements of your operations.
- ☉ **Safety Compliance:** Our equipment adheres to the highest safety standards, minimizing risks.
- ☉ **Competitive Pricing:** Invest in our top-tier material handling equipment without straining your budget.

General contracting sectors, it provides a systematic and secure solution for material management.



# CRONE



# MATERIAL HANDLING EQUIPMENT



303.761.5452



sale@cronemetals.com



cronemetals.com

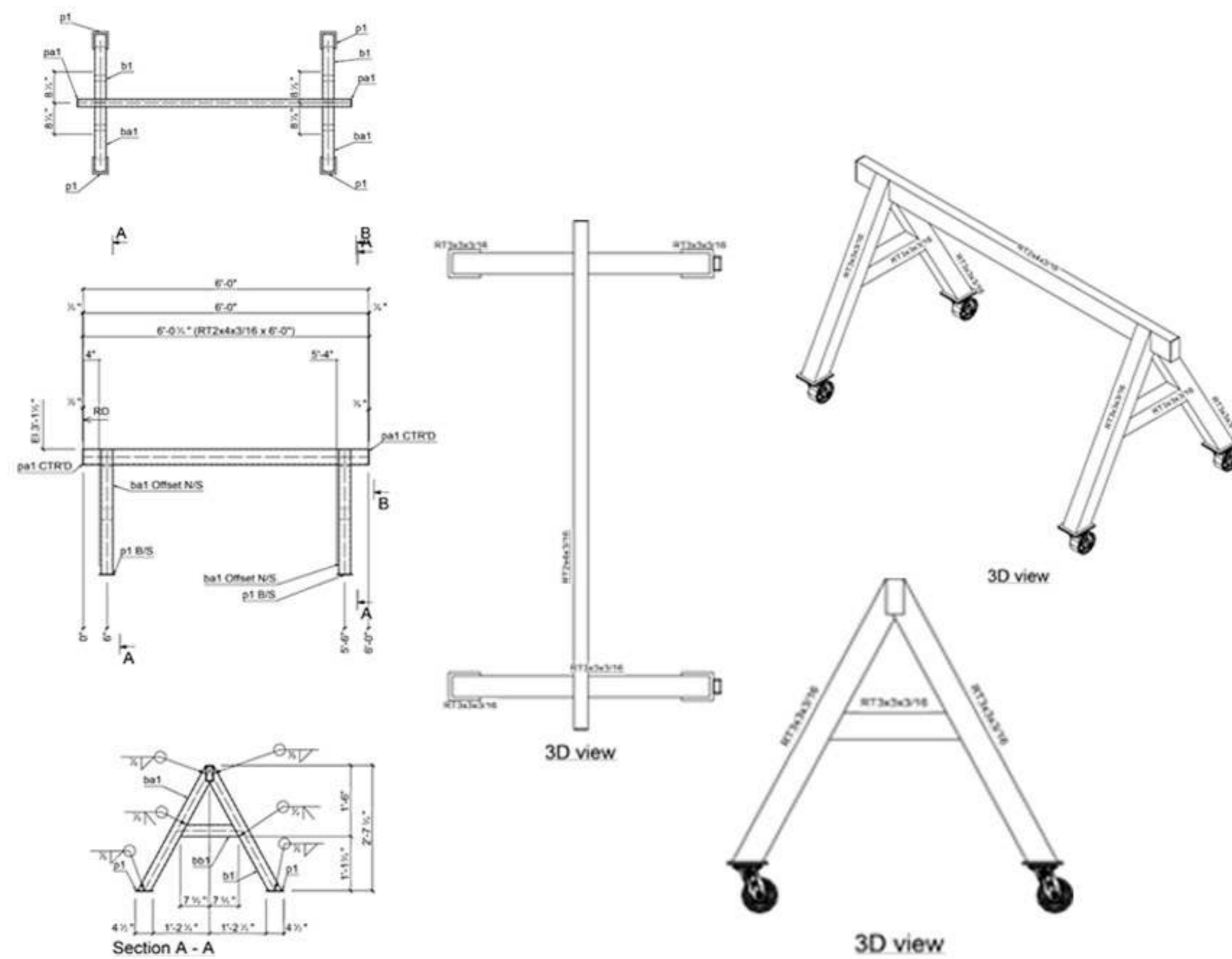
# HEAVY DUTY ALUMINUM SAWHORSES

**Load rating 2,000 lbs**

**36" H x 36" W, 48" L**

## PRODUCT OVERVIEW:

Crone Metals' Heavy Duty Aluminum Sawhorses are expertly welded to provide reliable support for various construction applications. Whether you are a glazier or a warehouse owner, these sawhorses are crafted from premium-grade aluminum, ensuring long-term durability and performance.



## FEATURES:

- ✔ **Expertly Welded Construction:** Ensures robustness and stability through precision welding techniques.
- ✔ **Strength & Stability:** Built to withstand heavy loads, ideal for commercial use.
- ✔ **Lightweight Design:** Easy to handle and transport, without sacrificing strength.
- ✔ **Adjustable Legs:** Customizable height to suit various tasks and user preferences.
- ✔ **Industrial-Grade Casters:** Enhances mobility for on-site convenience.
- ✔ **Corrosion Resistant:** Treated for resistance against environmental wear.
- ✔ **Professional Grade:** Suitable for heavy industrial tasks and delicate precision work.

# INDUSTRIAL ADJUSTABLE CART

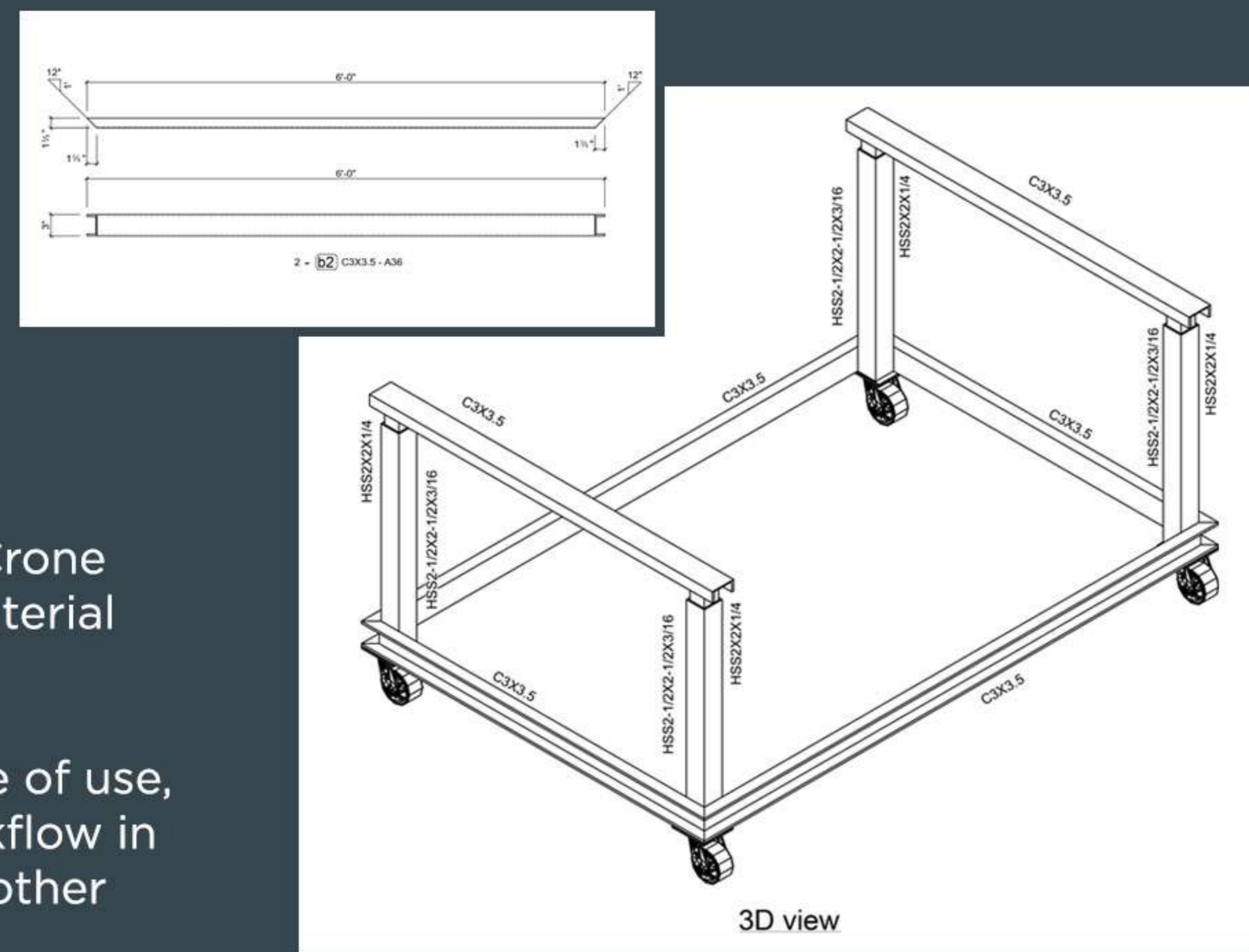
**Load rating 4,000 lbs**

**72" L x 48" W x 36" H**

## PRODUCT OVERVIEW:

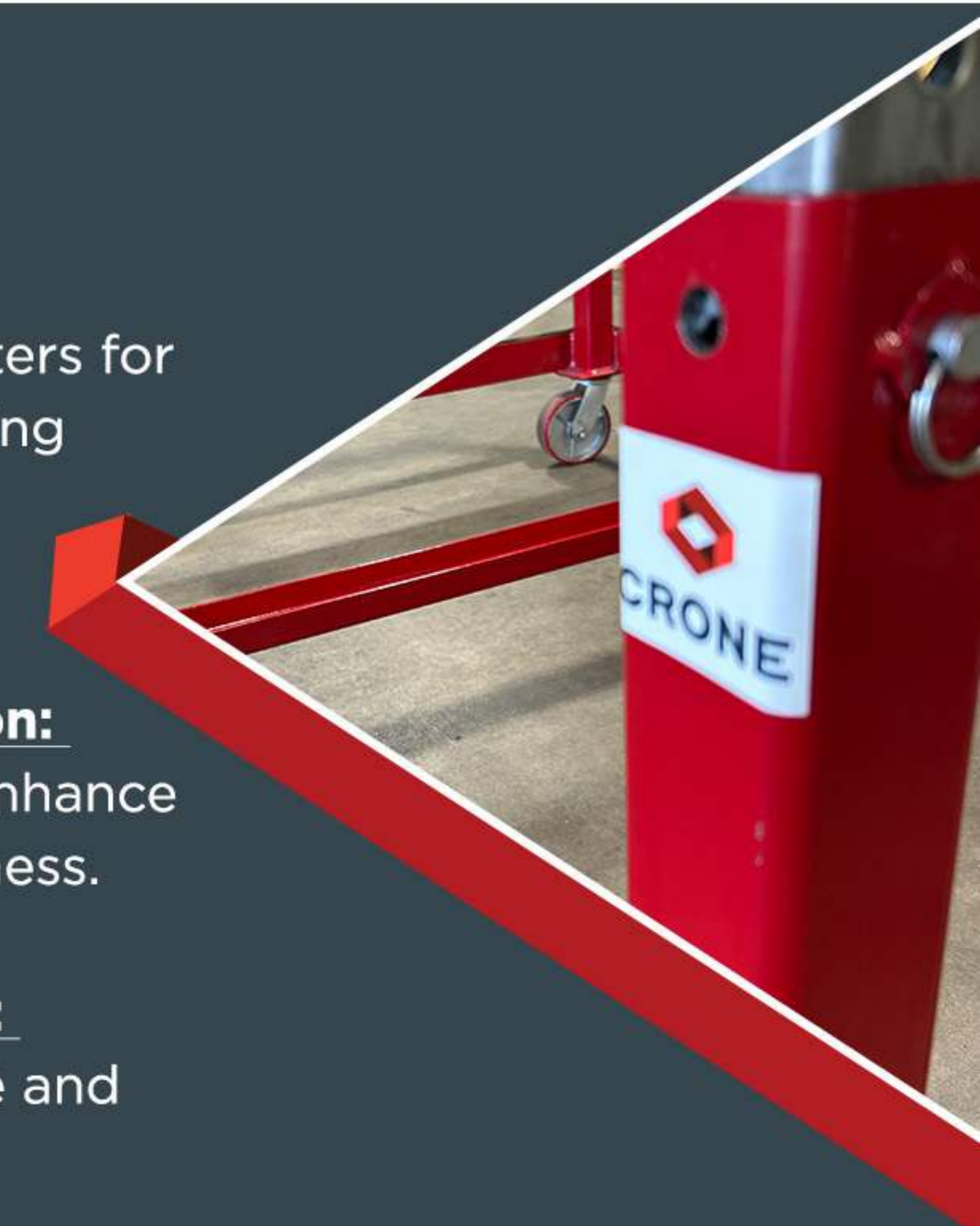
The Industrial Adjustable Cart from Crone Metals is a meticulously designed material handling solution for the workplace.

Engineered for functionality and ease of use, this cart is essential for efficient workflow in drywall, roofing, waterproofing, and other specialized fields.



## FEATURES:

- ✔ **Expertly Welded Frame:** Provides enhanced durability and load-bearing capabilities.
- ✔ **Load Capacity:** Designed to handle substantial weight with a reinforced structure.
- ✔ **Adjustable Shelves:** Customize the cart's layout to fit various sizes and types of materials.
- ✔ **Smooth Mobility:** Industrial-grade casters for effortless maneuvering across multiple terrains.
- ✔ **Rugged Construction:** Welded steel clips enhance stability and robustness.
- ✔ **Ergonomic Handles:** Ensures comfortable and controlled handling.



# TREE RACK

**Load rating 3200 lbs**

**92" L x 45" W x 81" H**

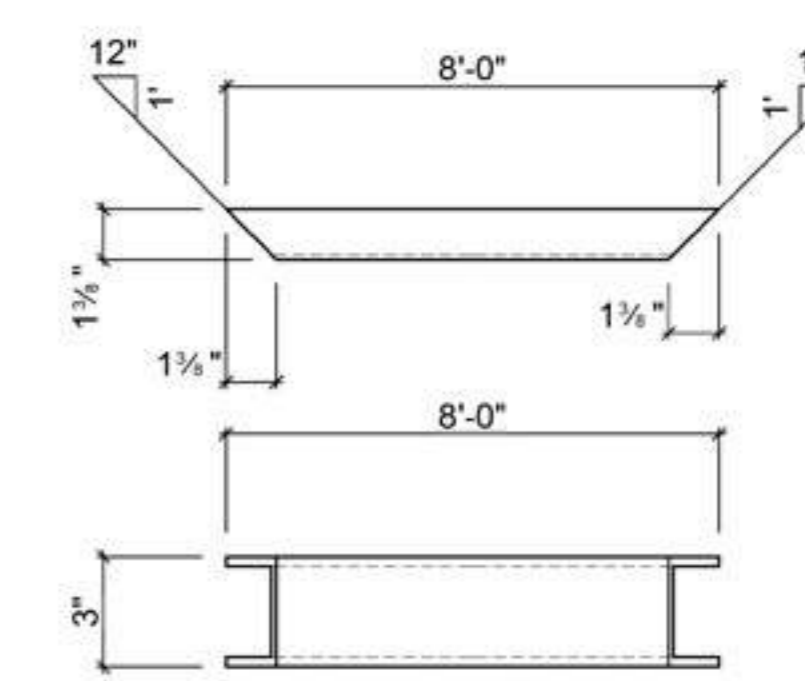
## PRODUCT OVERVIEW:

Crone Metals' Tree Rack is a specialized, carefully welded rack system developed for the organized storage and transportation of elongated materials. Perfectly suited for the glazing and general contracting sectors, it provides a systematic and secure solution for material management.



## FEATURES:

- ✔ **Expertly Welded Joints:** Offers maximum strength and reliability for storage and transportation.
- ✔ **High-Capacity Design:** Efficiently stores multiple sizes of materials in one convenient location.
- ✔ **Sturdy Construction:** Built with top-quality steel and welded joints for long-lasting service.
- ✔ **Industrial-Grade Casters:** Enables easy mobility for tailored placement and transport.
- ✔ **Easy Accessibility:** Thoughtfully designed for quick access to materials without hindrance.
- ✔ **Safety Mechanism:** Includes safety clips to secure materials during transport or storage.
- ✔ **Customizable Options:** Available in various configurations to meet unique storage requirements.



2 - ba100 Name - A36

